

**CO<sub>2</sub> laser consumables – Murata  
Wiedemann® – Fanuc®**



### Highest quality products

- OEM quality
- OEM-approved optics
- 100% satisfaction guarantee

### Technical service

OEM-trained technicians on staff with over 25 years of experience.

Free application support for all laser OEMs.

We stand behind our products with industry-leading technical expertise.

### Chemical code key

#### Lens

PFL	Pre-focus
MEN	Meniscus
PLX	Plano-convex
MTD	Mounted
Not MTD	Not mounted
LA	Low absorption
PO	Plano

#### Mirrors

CU	Copper
GAAS	Gallium arsenide
SI	Silicon
GE	Germanium
ZNSE	Zinc-selenide
PS	Phase shift
MMR	Maximum metal reflector
ATFR	Absorbing thin film reflector
TRZ	Total reflector – zero phase shift
ZPS	Zero phase shift
OC	Output coupler
RM	Rear mirror
COL-I	Collimator input
COL-O	Collimator output
AO	Adaptive optic
MO	Molybdenum
UC	Uncoated
MCX	Convex
MCC	Concave

#### Measurements

DIA	Diameter
FL	Focal length
ET	Edge thickness

#### Nozzles

CP	Chrome plated
HD/HP	High density/high pressure

### Product is available for the following major OEM brands

Amada®

---

Behrens®

---

Bystronic®

---

Cincinnati®

---

Finn-Power®

---

GHT-SHT®

---

Haas®

---

Haco®

---

Hankwang®

---

Laserdyne®

---

Laser Lab®

---

LVD®

---

Mazak®

---

Mitsubishi®

---

Murata Wiedemann® – Fanuc®

---

Niigata®

---

NTC® – Beyeler®

---

Precitec®

---

Prima Industrie®

---

Raskin®

---

Rouchaud®

---

Salvagnini®

---

Strippit®

---

Tanaka®

---

Thyssen®

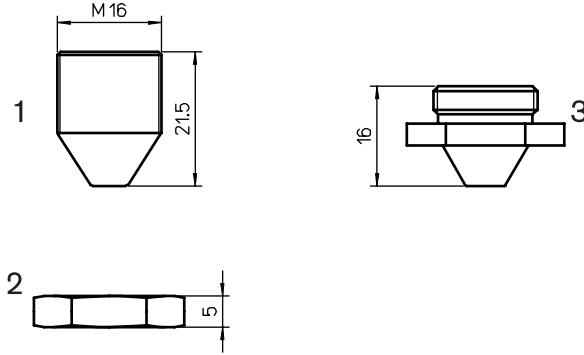
---

Trumpf®

---

Valfiv®

---



**Consumables**

Centricut part number	Reference number	Alternate reference	Description	Pkg qty
WI338-1210	P26-71270-60-1.0	L66	Nozzle – 1.0 mm	1
1 WI338-1214	P26-71270-60-1.4	L125	Nozzle – 1.4 mm	1
WI338-1215	P26-71270-60-1.5	L279	Nozzle – 1.5 mm	1
2 WI338-0001		AL46	Retainer nut	1
WI338-1110	P37-71110-039-1.0	L309	Nozzle – 1.0 mm	1
WI338-1112	P37-71110-039-1.2	L460	Nozzle – 1.2 mm	1
3 WI338-1115	P37-71110-039-1.5	L310	Nozzle – 1.5 mm	1
WI338-1120	P37-71110-039-2.0	L311	Nozzle – 2.0 mm	1
WI338-1125	P37-71110-039-2.5	L314	Nozzle – 2.5 mm	1

**Optics**

Centricut part number	Reference number	Type	Diameter	Focal length	Edge thickness
<b>Lenses</b>					
WI339-1014	658108	MEN	1.5"	5.0"	.310"
WI339-5160	304725	PLX	2.0"	5.0"	.315"

**Optics care**

Centricut part number	Reference number	Description	Pkg qty
TR300-6452	N/A	CO <sub>2</sub> Lens paper (50 sheets)	1
TR300-1010	AL1010	Dropper, lens cleaning fluid	1
TR300-255	AL255	Loupe, magnifying	1
TR300-271	AL271	Base, lens maintenance	1
TR300-7388	787388	Mirror polish (250 ml)	1



**Broadest product line in the industry!**



**Hypertherm, Inc.**  
Hanover, NH 03755 USA  
603-643-3441 Tel

**Hypertherm Europe B.V.**  
4704 SE Roosendaal, Nederland  
31 165 596907 Tel

**Hypertherm (Shanghai)  
Trading Co., Ltd.**  
PR China 200052  
86-21 5258 3330 /1 Tel

**Hypertherm (S) Pte Ltd.**  
Singapore 349567  
65 6 841 2489 Tel

**Hypertherm (India) Thermal  
Cutting Pvt. Ltd.**  
Chennai, Tamil Nadu  
91 0 44 2834 5361 Tel

**Hypertherm Brasil Ltda.**  
Guarulhos, SP - Brasil  
55 11 2409 2636 Tel

**Hypertherm México, S.A. de C.V.**  
México, D.F.  
52 55 5681 8109 Tel

[www.hypertherm.com](http://www.hypertherm.com)



**Hypertherm®**

**Cut with confidence™**